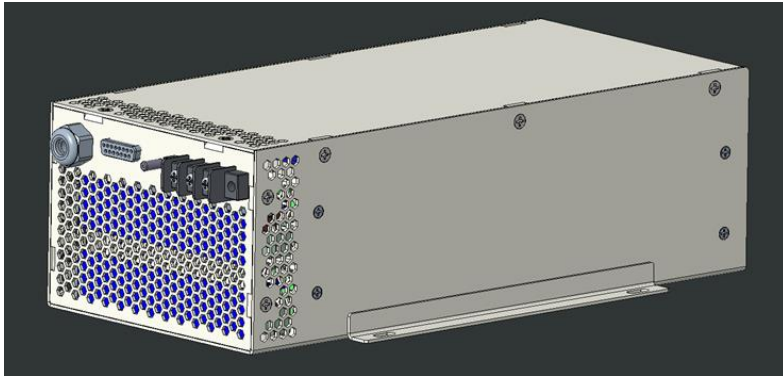




### KACC-40-10 Capacitor Charging Module 4KW, 1KV



#### Applications

- Medical
- Industrial
- Embedded

Parameter	Value	Unit
Output Power	4000	W
Output Voltage	0 – 1000	VDC
Universal AC Input	90 - 264	VAC
Power Factor Correction (PFC)	0.97	W/VA
Efficiency	> 91	%
Operating Temperature	-30 to +55	°C
Storage Temperature	-40 to +85	°C
Humidity, non-condensing	0 to 95	%
Dimensions (W x H x L) Without Connectors	14.6 x 10.2 x 32.1 5.76 x 4.00 x 12.64	cm inches

#### Safety & Certifications:

- IEC 60601-1 with 2MOPP output isolation
- Type BF leakage current rating
- IEC/EN/UL 62368 Safety compliance
- EN55011 Class A for conducted and radiated emissions
- SEMI F47 compliant with 20ms holdup at full power



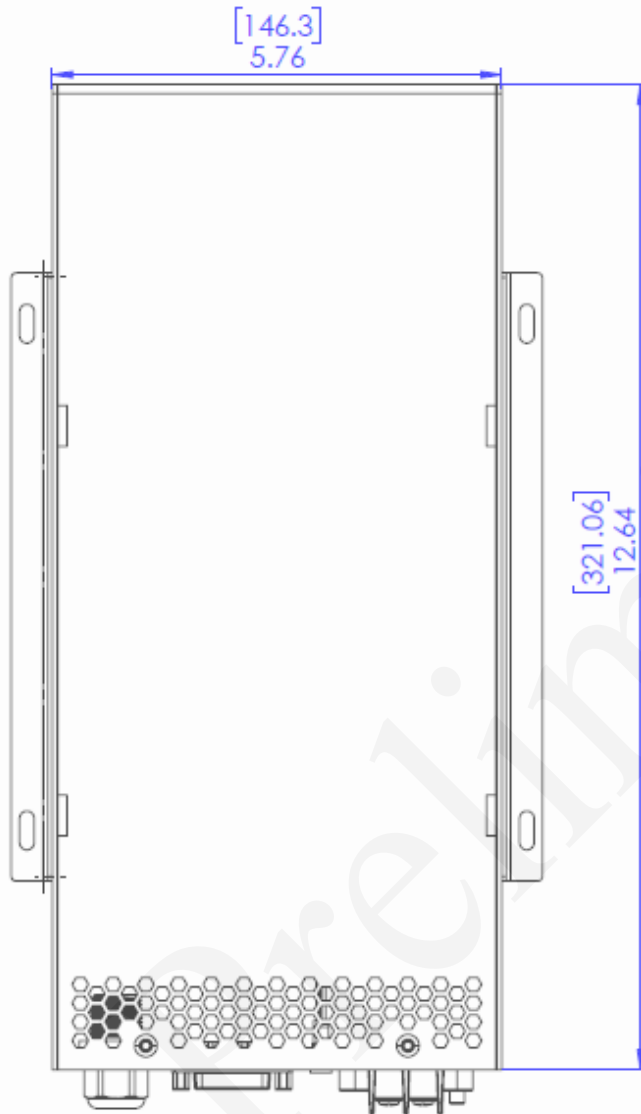
#### Features

- Constant Voltage, Constant Current, or Constant Power
- Programmable Output: 0-1000V
- Universal AC input with full output power factor correction
- High reliability for critical applications (HALT/HASS and DFMEA)
- Internal variable speed fan minimizes noise & maximizes life
- High efficiency with advanced SiC technology



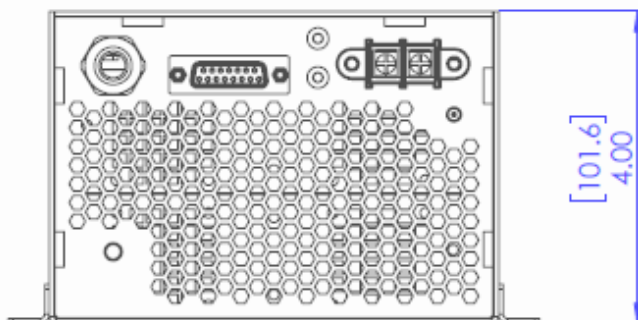
I/O

- AC Input: Terminal block with screws (12" flying leads on request)
- DC Output: 12" flying leads (connector available on request)
- 15-pin D-sub connector for analog and CAN bus. Status including AC OK, Output OK, Over-temperature, Over-voltage, and Over-current.



High power-density:  
 $0.84\text{W}/\text{cm}^3$ ; ( $14\text{W}/\text{in}^3$ )

Small volume:  
 $4772\text{ cm}^3$ ; ( $291\text{ in}^3$ )



Dimensions:  
[mm]  
inches